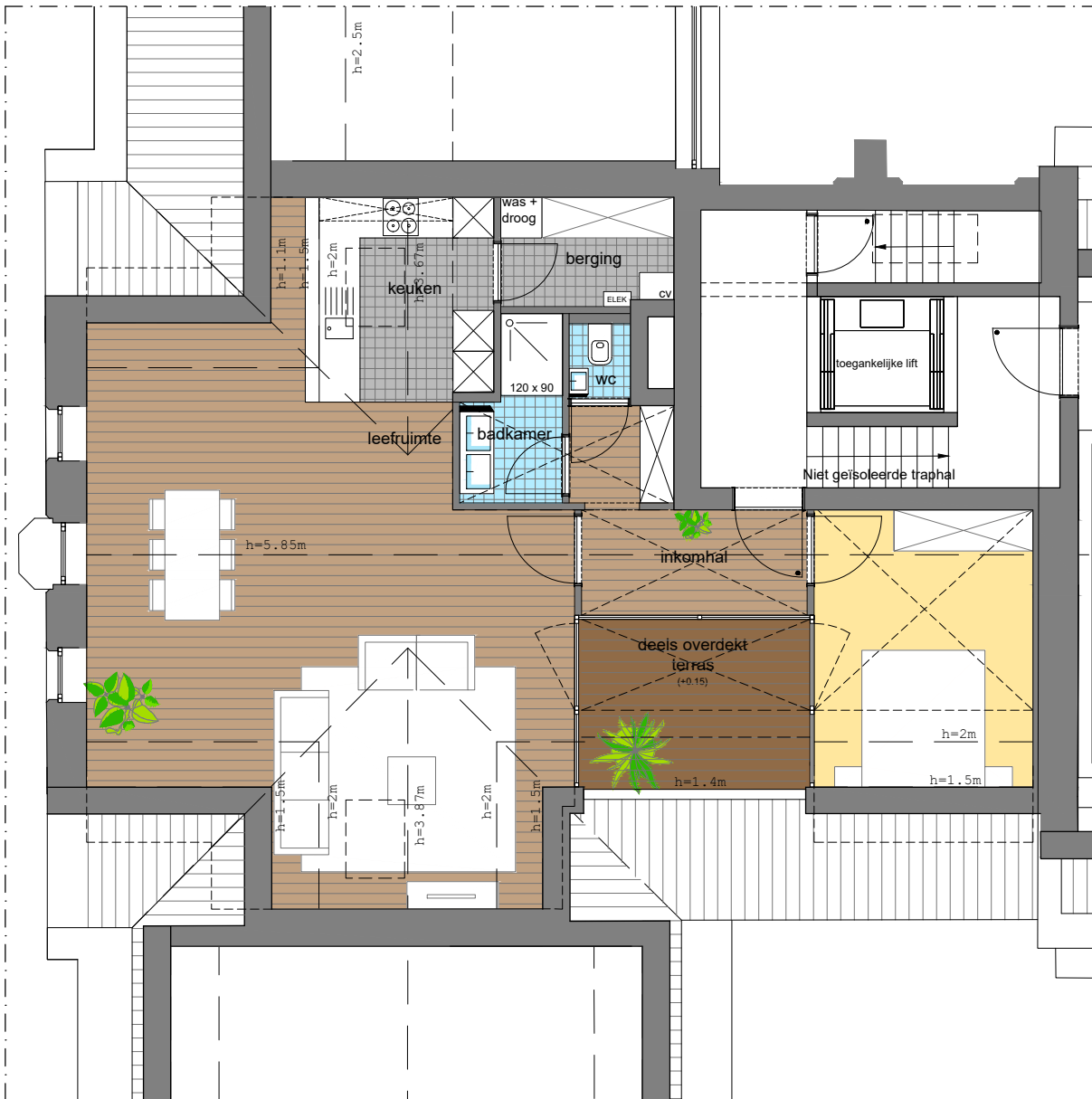


Groot Park

Salve Mater

appartement B.3.M

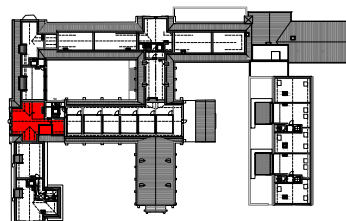
88,64 m² + 8,4 m² terras



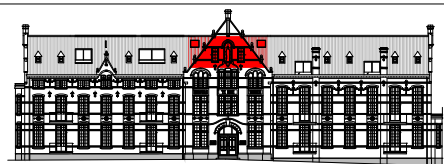
NETTO OPPERVLAKTE

inkomhal	7,3	m ²
leefruimte	49,0	m ²
keuken	7,6	m ²
berging	4,0	m ²
slaapkamer	12,9	m ²
badkamer	3,4	m ²
toilet	1,0	m ²
terras	8,0	m ²

h = hoogte onder hellend dak



grondplan verdieping 3 - nieuwe bestand



SNEDE A-A; ZUIDGEVEL



SNEDE C-C